

Castle Score

MAKEorBREAK™

L1 Geography
NCEA Skills

Got the answer?
Be the first to start
with your group.
Got it? ... castle,
... other group's.
... group with the most
castles wins. Enjoy!

**Geography SAMPLE
Level 1 Exam Skills**

1	21	41
2	22	42
3	23	43
4	24	44
5	25	45
6	26	46
7	27	47
8	28	48
9	29	49
10	30	50
11	31	51
12	32	52
13	33	53
14	34	54
15	35	55
16	36	56
17	37	57
18	38	58
19	39	59
20	40	60

Question 1:
The line of _____
located at 0° is called the
equator.

Score

Answer

Answer:
Latitude

MAKEorBREAK?

Question 2:
True or false?
*Lines of longitude reach a
maximum of 90° east and
west of the Greenwich
Meridian.*

Score

Answer

Answer:
False - 180° maximum

MAKEorBREAK?

Question 3:
The South Pole is located 90°S
from the _____.

a) Equator
b) North Pole
c) Greenwich Meridian
d) International Date Line

Score

Answer

Answer:
a) Equator

MAKEorBREAK?

Question 4:
What important graphing convention is missing
from the bar graph below?

Score

Answer

Answer:
Labelled axes

MAKEorBREAK?

Question 5:
Describe what this graph shows about unemployment
rates in ONE of the selected countries.

Score

Answer

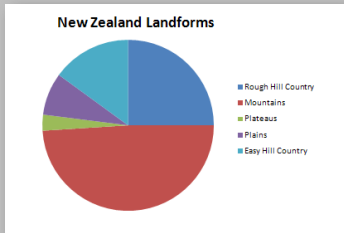
Answer:
South Africa's unemployment rate is more than double that of most other countries on the graph.
OR
Japan has the lowest unemployment rate out of these selected countries.
OR
New Zealand's unemployment rate is approximately 6% in 2010

Question 6:

What is ONE error that has been made in the construction of this graph?

Score

Answer



Answer:

The data had not been plotted largest to smallest, clockwise around the pie.

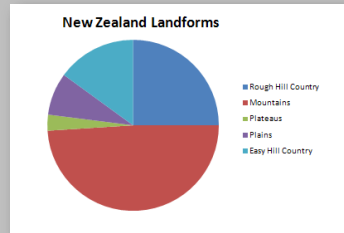
MAKEorBREAK?

Question 7:

What other type of graph could have been used to plot this data?

Score

Answer



Answer:

Percentage bar graph/strip graph

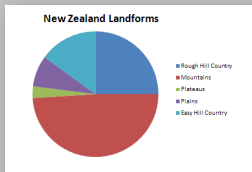
MAKEorBREAK?

Question 8:

Use the graph to make a generalisation about New Zealand landforms.

Score

Answer



Answer:

Nearly half of NZs landforms are mountains.
There are more mountains in NZ than any other landform.
Plateaus are the least-found landform in NZ.
NZ has a small percentage of flat landforms .
(answer cannot include any specific data – must be general)

Question 9:

Which of the following is *not* a natural feature that could be found on a topographical map?

Score

Answer

- a) Coastal Rocks
- b) Orchard
- c) Cliff
- d) River

Answer:

b) Orchard

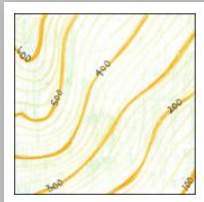
MAKEorBREAK?

Question 10:

What do the numbers on the contour lines in the diagram below represent?

Score

Answer



Answer:

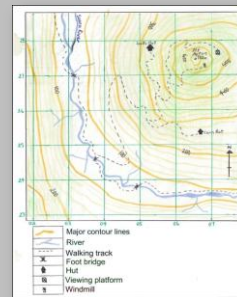
The height of the land in metres above sea level

Question 11:

Name the natural feature found at grid reference 065274

Score

Answer



Answer:

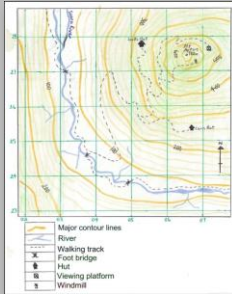
Mt Ayton

Question 12:

Name the cultural feature found at grid reference 049238

Score

Answer



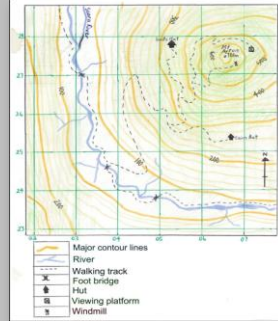
Answer:
Foot bridge

Question 13:

What is the height of Cairn Hut?

Score

Answer



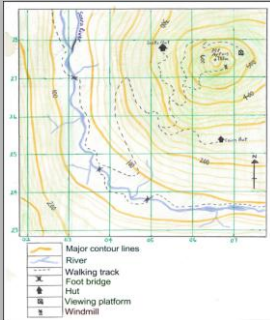
Answer:
270m (approx)

Question 14:

What is needed on this map to calculate the actual to distance from Scott's Hut to the viewing platform?

Score

Answer



Answer:
A scale

Question 15:

What is the relief of an area like when the contour lines are very close together on a topographical map?

Score

Answer

Answer:
Steep slope/relief

MAKEorBREAK?

Question 16:

Which of the following is not an Important Geographic Idea?

- a) Systems
- b) Pattern
- c) Location
- d) Conservation

Score

Answer

Answer:
d) Conservation

MAKEorBREAK?

Question 17:

Match the following Important Geographic Ideas with their meaning.

- 1) Accessibility
- 2) Process
- 3) Interaction
- 4) Perception
- a) A sequence of related actions
- b) How easy is to get to a place
- c) How one's environment is viewed
- d) A reciprocal relationship

Score

Answer

Answer:
Accessibility b), Process a), Interaction d), Perception c)

MAKEorBREAK?

Question 18:

True or false?

A fourteen figure grid reference provides a more accurate location than a six figure grid reference.

Score

Answer

Answer:

True

Question 19:

A person who holds neither a positive nor a negative viewpoint about an issue is said to be what?

Score

Answer

Answer:

Neutral

Question 20:

What am I?

I am a horizontal straight line that represents a spectrum of viewpoints. The ends of the line represent opposing viewpoints. I have notches that display different people's or group's viewpoints about an issue.

Score

Answer

Answer:

Continuum

MAKEorBREAK?

Question 21:

Identify the missing word:
Viewpoints can be described as negative, positive, neutral, social, political, and environmental. Viewpoints which consider the financial costs and gains of an issue are described as _____.

Score

Answer

Answer:

economic

MAKEorBREAK?

Question 22:

Which of the following features and conventions are *not* regularly found on a topographic map?

- a) Spot height
- b) Grid line
- c) Wind rose
- d) Intermediate contour line

Score

Answer

Answer:

c) Wind rose

MAKEorBREAK?

Question 23:

Which direction would you travel if you walked from Coppen's Homestead to the orchard on Noble Road?



Score

Answer

Answer:
South west

Question 24:

What evidence is there on the map that you would be walking uphill if you walked from the western end of Wilsons Road to the pine forest?

Score

Answer



Answer:
The numbers on the contour lines/height above sea level increase as you move from Wilsons Road to the pine forest.

Question 25:

Name the first cultural feature you would reach if you walked directly north east from the intersection between Noble Road and Kirton Road?

Score

Answer



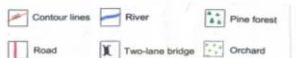
Answer:
The Old Mill

Question 26:

What is the approximate height above sea level of the bridge that crosses the Kenny River on Kirton Road?

Score

Answer



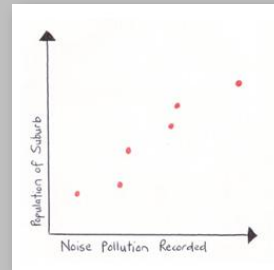
Answer:
50m (accept any answer between 0 and 100m)

Question 27:

What is the relationship shown by the scatter graph?

Score

Answer



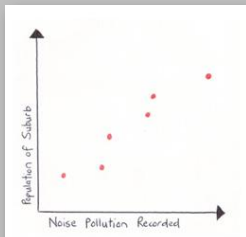
Answer:
A positive relationship. As the population of a suburb increases, the amount of noise pollution increases.

Question 28:

What basic graphing convention is missing from the scatter graph?

Score

Answer



Answer:
A title

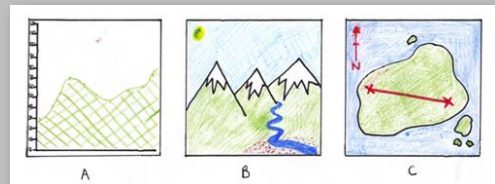
MAKEorBREAK?

Question 29:

Which diagram below is a cross section of a landscape?

Score

Answer



Answer:
A.

MAKEorBREAK?

Question 30:

What do the numbers on the y axis (up the side) of a cross section refer to?

Score

Answer

Answer:
Height above sea level

MAKEorBREAK?

Question 31:

Why are cross sections useful to Geographers?

Score

Answer

Answer:
They give a realistic idea of the relief/slope and heights of a landscape

Question 32:

What type of map is needed to construct a cross section?

Score

Answer

Answer:
A topographical map/a map with contour lines

MAKEorBREAK?

Question 33:

Why is the shape of the land always drawn freehand rather than ruled in a cross section?

Score

Answer

Answer:
To allow the landscape to look more realistic/natural

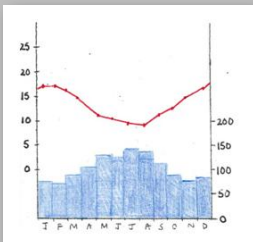
MAKEorBREAK?

Question 34:

What type of graph is this?

Score

Answer



Answer:
Climograph/climate graph

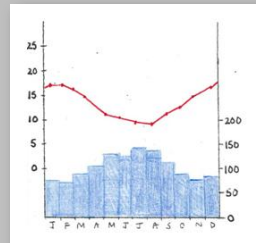
MAKEorBREAK?

Question 35:

What do the blue bars on the graph represent?

Score

Answer



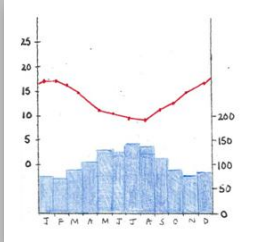
Answer:
Average monthly rainfall (except rainfall)

Question 36:

Which two months have the highest average temperatures?

Score

Answer



Answer:

January and February

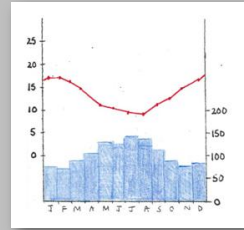
MAKEorBREAK?

Question 37:

Is the place this climograph is for, most likely located in the Northern or the Southern hemisphere?

Score

Answer



Answer:

Southern

Question 38:

What is the third element of climate which a climograph does not give any information about?

Score

Answer

Answer:

Wind

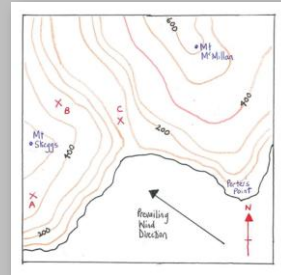
MAKEorBREAK?

Question 39:

On the map below, what is the prevailing wind direction?

Score

Answer



Answer:

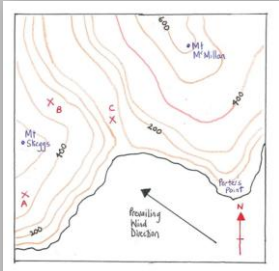
South east

Question 40:

What is the contour interval on this map?

Score

Answer



Answer:

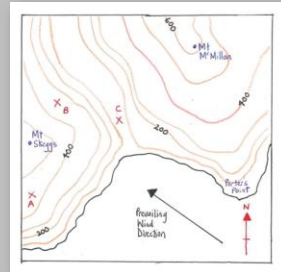
100m

Question 41:

Name the highest point on this map?

Score

Answer



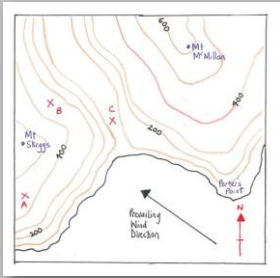
Answer:

Mt McMillan

Question 42:
Which X on the map is located in a valley?

Score

Answer

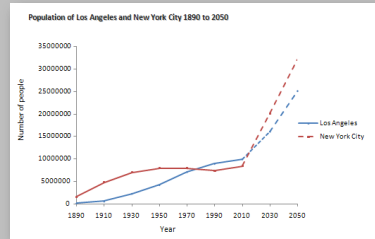


Answer:
C

Question 43:
What type of graph is this?

Score

Answer

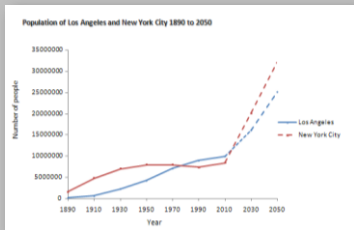


Answer:
A multiline graph

Question 44:
Between which years did New York City's population decrease?

Score

Answer



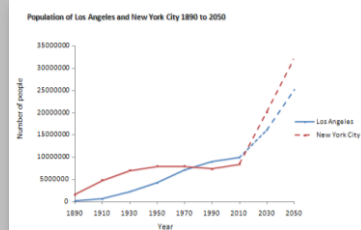
Answer:
1970 and 1990

MAKEorBREAK?

Question 45:
What year are the populations of Los Angeles and New York City projected to?

Score

Answer

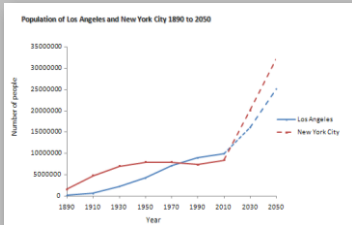


Answer:
2050

Question 46:
Describe Los Angeles population growth compared to New York City's.

Score

Answer



Answer:
Los Angeles population has increased steadily from 1910. New York City's population increased from 1890 but has become more constant from 1950.

Question 47:
What percentage of the population, (rounded to 1 dp) was made up of Indigenous Australians in 2006?

Score

Answer

Population data for Australia 2006

Total Population	20 848 760
Indigenous Australians	455 026
Residents born in New Zealand	476 719
Residents born in the United Kingdom	1 153 264
Population Growth Rate	1.7% per year

Answer:
2.2%

MAKEorBREAK?

Question 48:

As a percentage, (rounded to 1 dp), how many more Australian residents were born in the United Kingdom than New Zealand in 2006?

Score

Answer

Population data for Australia 2006

Total Population	20 848 760
Indigenous Australians	455 026
Residents born in New Zealand	476 719
Residents born in the United Kingdom	1 153 264
Population Growth Rate	1.7% per year

Answer:

UK residents 5.5% minus NZ residents 2.3% = 3.2%

Question 49:

According to this data, what would have been the estimated population of Australia in 2007?

Score

Answer

Population data for Australia 2006

Total Population	20 848 760
Indigenous Australians	455 026
Residents born in New Zealand	476 719
Residents born in the United Kingdom	1 153 264
Population Growth Rate	1.7% per year

Answer:

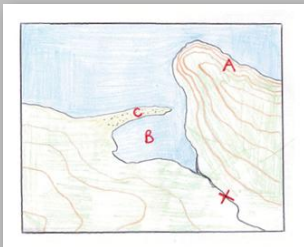
20 848 760 + 1.7% = 21 203 188

Question 50:

What is the natural feature marked X on the map?

Score

Answer



Answer:

A river/stream

MAKEorBREAK?

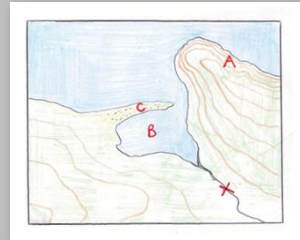
Question 51:

Match the landforms labelled A, B and C on the map with their correct names listed below.

- Estuary
- Cliff
- Spit

Score

Answer



Answer:

A = Cliff, B = Estuary, C = Spit

MAKEorBREAK?

Question 52:

How is a plateau or plain recognised on a topographical map?

Score

Answer

Answer:

There are few/no contour lines in the area or the contour lines are widely spaced apart.

MAKEorBREAK?

Question 53:

Calculate the total annual rainfall for Bali using the climograph below.

Score

Answer

Bali		J	F	M	A	M	J	J	A	S	O	N	D
Temperature (°C)		30	29	29	31	31	31	31	32	32	31	31	31
Rainfall (mm)		400	210	120	40	50	100	30	8	115	200	210	380

Answer:

1863 mm

MAKEorBREAK?

Question 54:

Calculate the rainfall range for Bali using the climograph below.

Score

Answer

Bali												
	J	F	M	A	M	J	J	A	S	O	N	D
Temperature (°C)	30	29	29	31	31	31	31	32	32	31	31	31
Rainfall (mm)	400	210	120	40	50	100	30	8	115	200	210	380

Answer:
392mm

MAKEorBREAK?

Question 55:

Calculate the average monthly temperature for Bali (round to 1dp) using the climograph below.

Score

Answer

Bali												
	J	F	M	A	M	J	J	A	S	O	N	D
Temperature (°C)	30	29	29	31	31	31	31	32	32	31	31	31
Rainfall (mm)	400	210	120	40	50	100	30	8	115	200	210	380

Answer:
31°C

MAKEorBREAK?

Question 56:

Calculate the temperature mode for Bali using the climograph below.

Score

Answer

Bali												
	J	F	M	A	M	J	J	A	S	O	N	D
Temperature (°C)	30	29	29	31	31	31	31	32	32	31	31	31
Rainfall (mm)	400	210	120	40	50	100	30	8	115	200	210	380

Answer:
31°C

MAKEorBREAK?

Question 57:

What error has been made in locating Christchurch on the map of New Zealand below?

Score

Answer



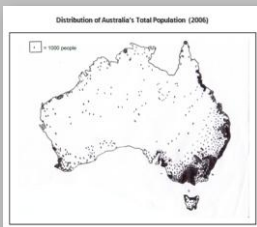
Answer:
The city has partly been located in the sea/the dot overlaps the coastline of NZ

Question 58:

What is ONE generalisation that can be made about the distribution of Australia's total population?

Score

Answer



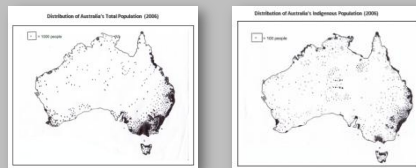
Answer:
• Most of the population is located on the coast
• There are large concentrations of people located on the east coast
• There is a low concentration of people living inland

Question 59:

What is ONE difference between the distributions of Australia's total population compared to the indigenous population?

Score

Answer



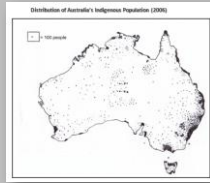
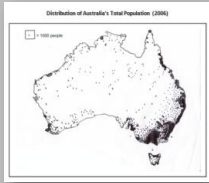
Answer:
The Indigenous population is more evenly spread throughout Australia compared to the total population which is mostly located close to the coast. OR There are some highly concentrated areas of Indigenous Australians on the north coast compared to the total population which is sparse on this coast. OR Indigenous Australian's are spread more throughout inland Australia compared to the total population.

Question 60:

Using these maps, why is it difficult to directly compare the number of Indigenous people with the total population of a particular area?

Score

Answer



Answer:

The dots on each map represent different quantities. A dot on the total population map represents 1000 people and a dot on the Indigenous population map represents 100 people.